

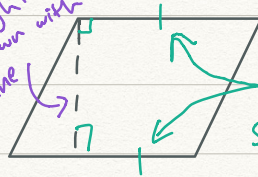
# Area of Parallelograms

9.01

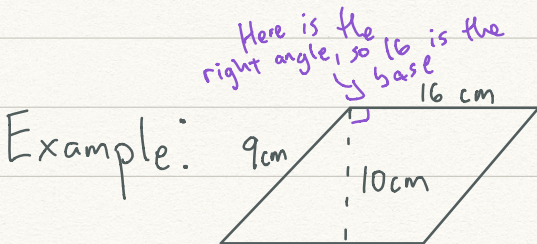
Area of a **parallelogram** = base (height)

$$A = bh$$

the height is usually shown with a dotted line



The base is whichever side is at a right angle to the height



Step 1 (write formula):  $A = bh$

Step 2 (substitute):  $A = 16(10)$

Step 3 (simplify):  $A = 160$

Step 4 (write units):  $A = 160 \text{ cm}^2$

area always has square units

check

$$A = bh$$

$$160 = 16(10)$$

$$160 = 160 \checkmark$$